



Staff Selection Commission
(Government Of India)

REGISTRATION NUMBER : 7205708024
EXAM DATE : 2-September-2016
EXAM NAME : SSC Examination 2016
TOTAL MARKS : 200

CANDIDATE NAME : GAJBHIYE VIPASHAYANA SUNIL
EXAM START TIME : 16:15:00
EXAM DURATION : 01:15 Hrs
TOTAL NO OF QUESTIONS : 100

Question 1. Select the related word/letters/numbers from the given alternatives:

दिये गये विकल्पों में से संबंधित शब्द/अक्षरों/संख्या को चुनिए।

Words : Sentence :: Paragraph: ?

शब्द : वाक्य :: अनुच्छेद : ?

Options:

1) TYPING

टंकण

2) Essay

निबन्ध

3) Letters

अक्षर

4) Phrase

वाक्यांश

Correct Answer: Essay

निबन्ध

Candidate Answer: Essay

निबन्ध

Question 2. Select the related word/letters/numbers from the given alternatives:

दिये गये विकल्पों में से संबंधित शब्द/अक्षरों/संख्या को चुनिए।

BDCE : GIHJ :: QSRT : ?

Options:

1) VWXY

2) UWMX

3) VXWY

4) UWNX

Correct Answer: VXWY

Candidate Answer: VXWY

Question 3. Select the related word/letters/numbers from the given alternatives:

दिये गये विकल्पों में से संबंधित शब्द/अक्षरों/संख्या को चुनिए।

9 : 162 :: 8 : ?

Options:

1) 96

2) 112

3) 128

4) 160

Correct Answer: 128

Candidate Answer: 128

Question 4.

For the following questions

Find the odd word/letters/number from the given alternatives.

दिये गये विकल्पों में से विषम शब्द/ अक्षर/संख्या चुनिए।

Options:

- 1) Apartment
अपार्टमेंट
- 2) Garage
गैराज
- 3) Quarter
क्वार्टर
- 4) Flat
फ्लैट

Correct Answer: Garage
गैराज

Candidate Answer: Garage
गैराज

Question 5.

For the following questions

Find the odd word/letters/number from the given alternatives.

दिये गये विकल्पों में से विषम शब्द/ अक्षर/संख्या चुनिए।

Options:

- 1) BDF
- 2) GIK
- 3) LMO
- 4) OQS

Correct Answer: LMO

Candidate Answer: LMO

Question 6.

For the following questions

Find the odd word/letters/number pair from the given alternatives.

दिये गये विकल्पों में से विषम शब्द/ अक्षर/संख्या युग्म चुनिए।

Options:

- 1) 5-21
- 2) 29-45
- 3) 48-68
- 4) 71-87

Correct Answer: 48-68

Candidate Answer: 71-87

Question 7. Arrange the following words as per order in the dictionary

निम्नलिखित शब्दों को शब्दकोश में दिए गए क्रम के अनुसार लिखिए ।

1. Diffident 2. Difficult 3. Different 4. Diffidence

Options:

- 1) 1,2,3,4
- 2) 3,2,4,1
- 3) 2,1,3,4
- 4) 3,2,1,4

Correct Answer: 3,2,4,1

Candidate Answer: 3,2,4,1

Question 8. A series is given, with one term missing. Choose the correct alternative from the given ones that will complete the series.

निम्नलिखित प्रश्न में एक अनुक्रम दिया गया है, जिसमें एक पद लुप्त है। दिए गए विकल्पों में से सही विकल्प चुनिए जो अनुक्रम को पूरा करेगा।

ACE, GJI, MQM, ?

Options:

- 1) SXQ
- 2) RWQ
- 3) SUQ
- 4) RXP

Correct Answer: SXQ**Candidate Answer:** [NOT ANSWERED]

Question 9. A series is given, with one term missing. Choose the correct alternative from the given ones that will complete the series.

निम्नलिखित प्रश्न में एक अनुक्रम दिया गया है, जिसमें एक पद लुप्त है। दिए गए विकल्पों में से सही विकल्प चुनिए जो अनुक्रम को पूरा करेगा।

6, 11, 21, 36, 56, ?

Options:

- 1) 42
- 2) 51
- 3) 81
- 4) 91

Correct Answer: 81**Candidate Answer:** 81

Question 10. If 4 cats can kill 4 rats in 4 minutes, how many minutes will it take 8 cats to kill 8 rats?

यदि चार बिल्लियाँ 4 मिनट में चार चूहों को मार सकती हैं, तो आठ बिल्लियाँ आठ चूहों को मारने में कितना समय लेंगी ?

Options:

- 1) 8
- 2) 4
- 3) 2
- 4) 16

Correct Answer: 4**Candidate Answer:** 16

Question 11. If the sum of three consecutive numbers is 15, what is the square of the middle number ?

यदि तीन क्रमागत संख्याओं का योग 15 है, तो मध्य संख्या का वर्ग क्या होगा?

Options:

- 1) 16
- 2) 25
- 3) 36
- 4) 9

Correct Answer: 25**Candidate Answer:** 25

Question 12. From the given words, select the word which cannot be formed using the letters of the given word.

निम्नलिखित विकल्पों में से वह शब्द चुनिए जो दिए गए शब्द के अक्षरों का प्रयोग करके नहीं बनाया जा सकता।

ILLUSTRIOUS

Options:

- 1) Lust
- 2) Trust
- 3) Riot
- 4) Rust

Correct Answer: Trust**Candidate Answer:** Trust

Question 13. If A=1,
CAT=60,
then MAN=?

यदि A=1,
CAT=60 हो,
तो MAN=?

Options:

- 1) 27
- 2) 90
- 3) 180
- 4) 182

Correct Answer: 182**Candidate Answer:** 182

Question 14.If 'P' means '+', 'Q' means 'x', 'R' means '÷', and 'S' means '-', then $44Q9R12S6Q4P16=?$

यदि 'P' का अर्थ '+', है, 'Q' का अर्थ 'x', 'R' का अर्थ '÷', और 'S' का अर्थ '-' हो, तो $44Q9R12S6Q4P16=?$

Options:

- 1) 25
- 2) 36
- 3) 112
- 4) 12

Correct Answer: 25**Candidate Answer:** 25

Question 15.If $84+96=4842$,
then $36+78=?$

यदि $84+96=4842$ हो,
तो $36+78=?$

Options:

- 1) 3918
- 2) 3678
- 3) 3819
- 4) 1839

Correct Answer: 3918**Candidate Answer:** 3918

Question 16.Find the missing number from the given responses:

6	15	20
8	4	5
3	5	20
51	65	?

दिए गए विकल्पों में से लुप्त अंक ज्ञात कीजिए ?

Options:

- 1) 12
- 12
- 2) 51
- 51
- 3) 56
- 56
- 4) 120
- 120

Correct Answer: 120

120

Candidate Answer: [NOT ANSWERED]

Question 17.Rajesh walks 2 km to south, then turns north-east, and walks 3 km. Then he turns south and walks 2 kms. Then he turns west and walks 4 kms. Finally, he turns north-west and walks 5 kms. In which direction is he from his starting point?

राजेश दक्षिण की ओर 2 कि.मी. चलता है, और फिर उत्तर - पूर्व की ओर मुड़कर 3 कि.मी. चलता है। उसके बाद वह दक्षिण की ओर मुड़कर 2 कि.मी. चलता है। फिर पश्चिम की ओर मुड़कर 4 कि.मी. चलता है। अंत में वह उत्तर-पश्चिम की तरफ मुड़ता है, और 5 कि.मी. चलता है। वह शुरुआती स्थान से किस दिशा में है ?

Options:

- 1) North-west
उत्तर-पश्चिम
- 2) North-east
उत्तर-पूर्व
- 3) South-east
दक्षिण-पूर्व
- 4) South-west
दक्षिण-पश्चिम

Correct Answer: North-west

उत्तर-पश्चिम

Candidate Answer: North-west

उत्तर-पश्चिम

Question 18. One statement is given followed by two conclusions/assumptions, I and II. You have to consider the statement to be true, even if it seems to be at variance from commonly known facts. You are to decide which of the given conclusions/assumptions can definitely be drawn from the given statement.

Statement:

- I) Quality has a price tag.
- II) India is allocating lots of funds to education.

Conclusions:

- I) Quality of education in India would improve.
- II) Funding alone can enhance quality of education.

निम्नलिखित प्रश्न में एक या दो वक्तव्य दिये गये हैं, जिसके आगे दो निष्कर्ष/मान्यताएं, I और II निकाले गये हैं। आपको विचार करना है कि वक्तव्य सत्य है चाहे वह सामान्यतः शर्त तथ्यों से भिन्न प्रतीत होता हो। आपको निर्णय करना है कि दिए गए वक्तव्य में से कोन-सा निश्चित रूप से सही निष्कर्ष/मान्यता निकाला जा सकता है ?

कथन :

- I) गुणवत्ता का एक मूल्य होता है।
- II) भारत शिक्षा के लिए काफी धन का आवंटन कर रहा है।

निर्णय:

- I) भारत में शिक्षा की गुणवत्ता में सुधार होगा।
- II) केवल निधीयन से ही शिक्षा की गुणवत्ता को बढ़ाया जा सकता है।

Options:

- 1) Only Conclusion I follows
केवल निष्कर्ष I सही है।
- 2) Only Conclusion II follows
केवल निष्कर्ष II सही है।
- 3) Both the Conclusions I and II follow
निष्कर्ष I और II दोनों सही हैं।
- 4) Neither Conclusion I nor II follows
ना तो निष्कर्ष I सही है और ना ही II सही है।

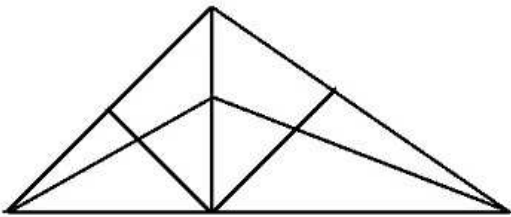
Correct Answer: Only Conclusion I follows

केवल निष्कर्ष I सही है।

Candidate Answer: [NOT ANSWERED]

Question 19. How many triangles are there in the following figure?

निम्नलिखित आकृति में कितने त्रिभुज हैं ?

**Options:**

- 1) 18
- 2) 13
- 3) 9
- 4) 5

Correct Answer: 18**Candidate Answer:** 18

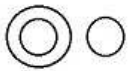
Question 20. Identify the diagram that best represents the relationship among classes given below
Males, Fathers, Engineers

वह आरेख चुनिये जो नीचे दिये गये वर्गों के बीच सही सम्बन्ध को दर्शाता है।

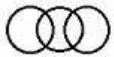
पुरुष, पिता, इंजीनियर

Options:

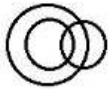
1)



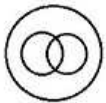
2)



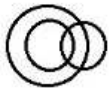
3)



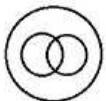
4)



Correct Answer:

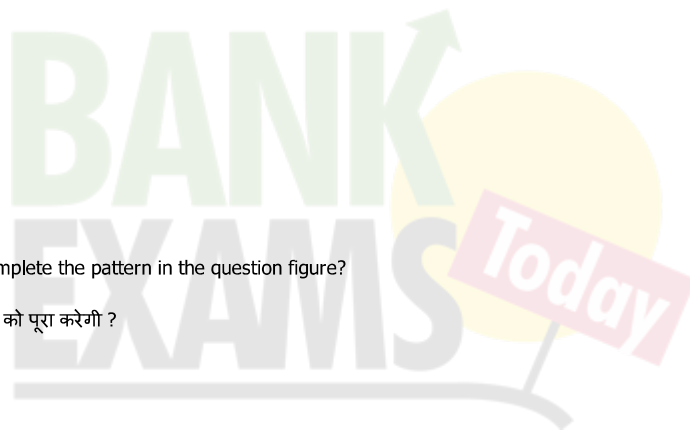
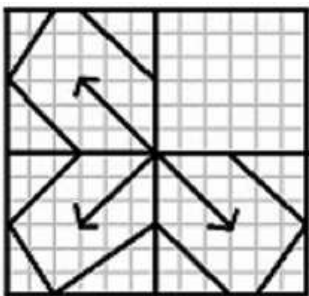


Candidate Answer:



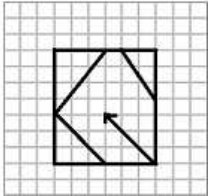
Question 21. Which answer figure will complete the pattern in the question figure?

कौनसी उत्तर-आकृति प्रश्न-आकृति के प्रतिरूप को पूरा करेगी ?

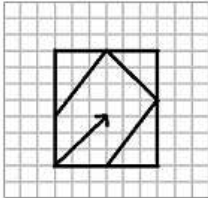


Options:

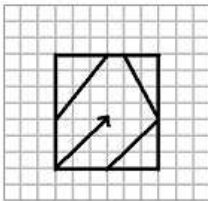
1)



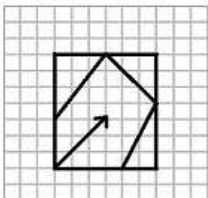
2)



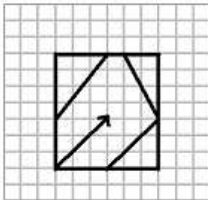
3)



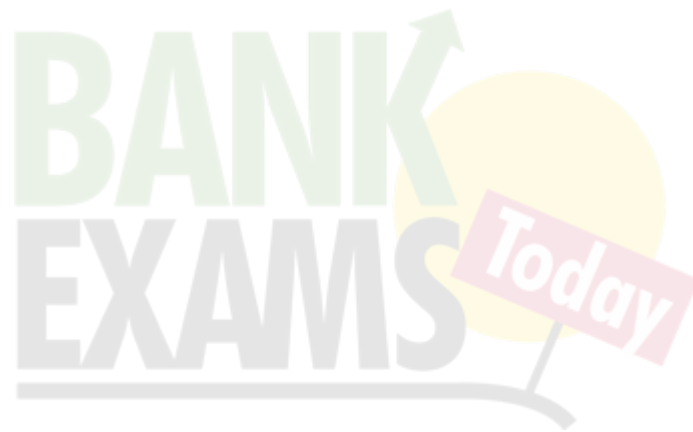
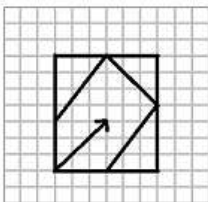
4)



Correct Answer:

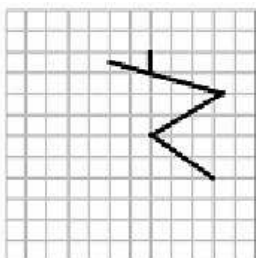


Candidate Answer:



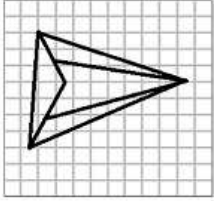
Question 22. From the given answer figures, select the one in which the question figure is hidden/embedded.

दिए गए विकल्पों में से उस उत्तर आकृति को चुनिए जिसमें प्रश्न आकृति निहित है।

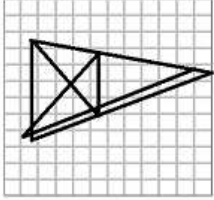


Options:

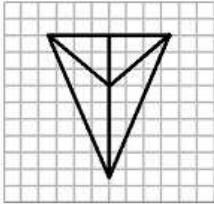
1)



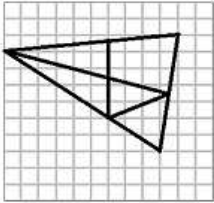
2)



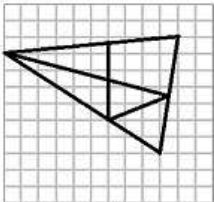
3)



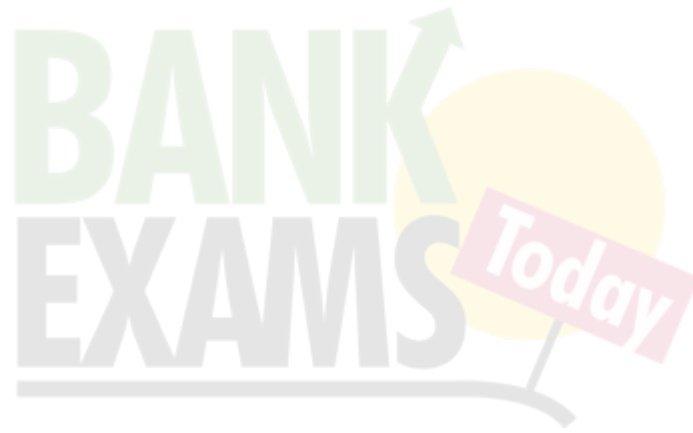
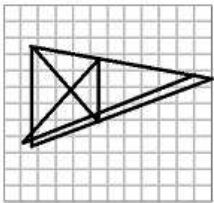
4)



Correct Answer:

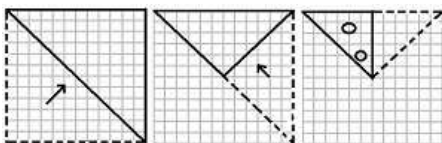


Candidate Answer:



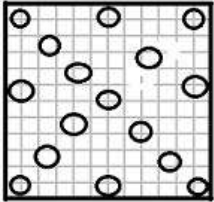
Question 23. A piece of paper is folded and cut as shown below in the question figure. From the given answer figures, indicate how it will appear when opened.

यदि किसी कागज को नीचे दी गई प्रश्न आकृति के अनुसार मोड़कर काटा जाए तो खोलने के बाद वह किस आकृति जैसा दिखाई देगा ?

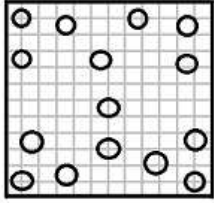


Options:

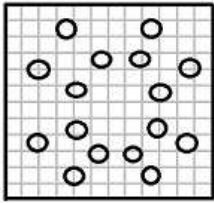
1)



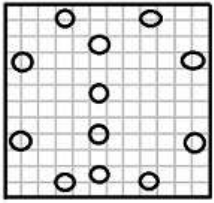
2)



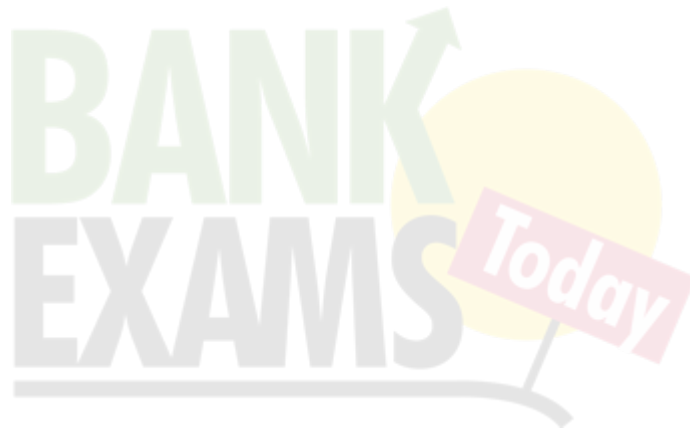
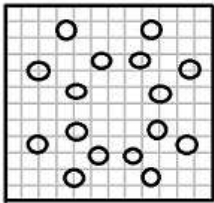
3)



4)



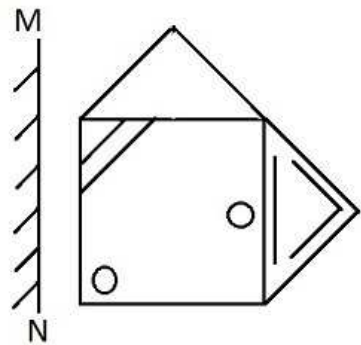
Correct Answer:



Candidate Answer: [NOT ANSWERED]

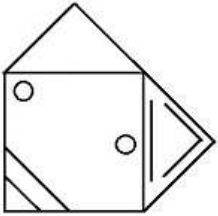
Question 24.If a mirror is placed on the line MN, then which of the answer figures is the right image of the given figure?

यदि एक दर्पण को MN रेखा पर रखा जाए तो दी गई उत्तर आकृतियों में से कौन-सी आकृति प्रश्न आकृति का सही प्रतिबिम्ब होगी ?

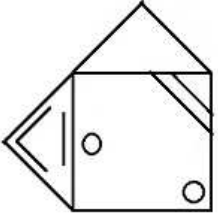


Options:

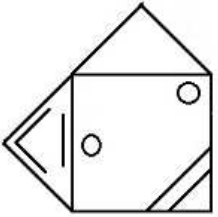
1)



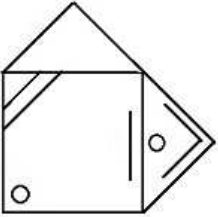
2)



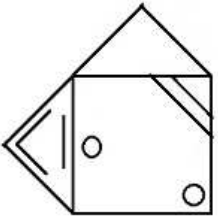
3)



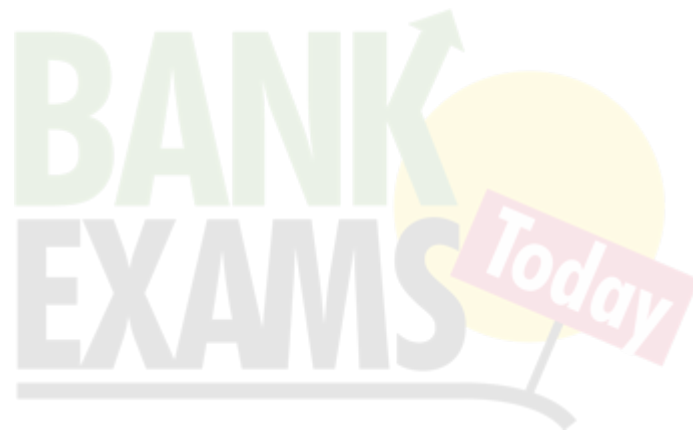
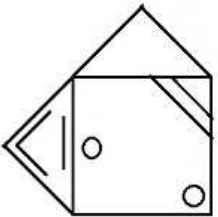
4)



Correct Answer:



Candidate Answer:



Question 25. In this question, the sets of numbers given in the alternatives are represented. The columns and rows of Matrix I are numbered from 0 to 4 and that of Matrix II are numbered from 5 to 9. A letter from these matrices can be represented first by its row and next by its column, e.g., 'A' can be represented by 02, 10, etc., and 'B' can be represented by 57, 65, etc. Similarly you have to identify the set for the word 'FADE'

एक शब्द केवल एक संख्या-समूह द्वारा दर्शाया गया है, जैसे कि विकल्पों में से किसी एक में दिया गया है। विकल्पों में दिए गए संख्या समूह अक्षरों के दो वर्गों द्वारा दर्शाए गए हैं, जैसे कि नीचे दिए गए दो आव्यूहों में हैं। आव्यूह I के स्तंभ और पंक्ति की संख्या 0 से 4 और आव्यूह II की 5 से 9 दी गई है। इन आव्यूहों से एक अक्षर को पहले उसकी पंक्ति और बाद में स्तंभ संख्या द्वारा दर्शाया जा सकता है। उदाहरण के लिए 'A' को 02, 10 आदि द्वारा दर्शाया जा सकता है तथा 'B' को 57, 65 आदि द्वारा दर्शाया जा सकता है। इसी तरह से आपको दिए हुए शब्द 'FADE' के लिए समूह को पहचानना है।

MATRIX - I

	0	1	2	3	4
0	I	E	A	O	U
1	A	O	U	I	E
2	E	I	O	U	A
3	O	U	E	A	I
4	U	A	I	E	O

MATRIX - II

	5	6	7	8	9
5	F	D	B	G	H
6	B	G	H	F	D
7	D	F	G	H	B
8	G	H	D	B	F
9	H	B	F	G	D

Options:

1) 76, 02, 75, 32

2) 68, 20, 57, 14

3) 55, 33, 65, 23

4) 89, 10, 96, 41

Correct Answer: 76, 02, 75, 32

Candidate Answer: 76, 02, 75, 32

Question 26. Chief Ministers of States are members of _____

निम्नलिखित विकल्पों में से किसके सदस्य राज्यों के मुख्य मंत्री होते हैं?

Options:

1) NITI Commission (Aayog)

निति आयोग

2) Finance Commission

वित्त आयोग

3) National Development Council

राष्ट्रीय विकास परिषद

4) Election Commission

चुनाव आयोग

Correct Answer: National Development Council

राष्ट्रीय विकास परिषद

Candidate Answer: Election Commission

चुनाव आयोग

Question 27. When the demand for a good increases with an increase in income, such a good is called _____

जब बढ़ती हुई आय के साथ साथ किसी वस्तु की मांग बढ़ती है तो ऐसी वस्तु को क्या कहते हैं ?

Options:

1) Superior good

उत्कृष्ट माल

2) Giffin good

निम्नस्तरीय माल

3) Inferior good

निकृष्ट माल

4) Normal good

सामान्य माल

Correct Answer: Superior good

उत्कृष्ट माल

Candidate Answer: Giffin good

निम्नस्तरीय माल

Question 28. Which of the following is the most important raw material for generation of power in India?

भारत में ऊर्जा उत्पादन के लिए निम्नलिखित में से कौनसा प्रमुख कच्चा पदार्थ है ?

Options:

- 1) Mineral Oil
खनिज तेल
- 2) Natural Gas
प्राकृतिक गैस
- 3) Uranium
यूरेनियम
- 4) Coal
कोयला

Correct Answer: Coal
कोयला

Candidate Answer: Coal
कोयला

Question 29. Which of the following is the treatment of water pollution?

निम्नलिखित विकल्पों में से कौन सा जल प्रदूषण का उपचार है?

Options:

- 1) Bag house filter
बैग हाउस निस्यन्दक
- 2) Windrow composting
विंड्रो कम्पोस्टिंग
- 3) Venturi scrubber
वैनच्यूरी स्क्रबर
- 4) Reverse Osmosis
प्रतिवर्ती परासरण

Correct Answer: Reverse Osmosis
प्रतिवर्ती परासरण

Candidate Answer: [NOT ANSWERED]

Question 30. The Comptroller and Auditor General is closely connected with which of the following Committees of Parliament?

नियन्त्रक एवं महालेखापरीक्षक प्राथमिक रूप से संसद की निम्नलिखित में से किस समिति से जुड़ा हुआ है ?

Options:

- 1) The Estimates Committee
प्राक्कलन समिति
- 2) The Committee on Public Undertakings
सार्वजनिक उपक्रम समिति
- 3) The Public Accounts Committee
लोक लेखा समिति
- 4) All of these
सभी विकल्प सही हैं

Correct Answer: The Public Accounts Committee
लोक लेखा समिति

Candidate Answer: The Public Accounts Committee
लोक लेखा समिति

Question 31. The demand of a commodity is a direct demand but the demand of a factor of production is called a

किसी वस्तु की माँग एक प्रत्यक्ष माँग है, किंतु उत्पादन के घटक की माँग क्या कहलाती है ?

Options:

- 1) Crossed demand
अनुप्रस्थ माँग
- 2) Joint demand
संयुक्त माँग
- 3) Derived demand
व्युत्पन्न माँग
- 4) Independent demand
स्वतंत्र माँग

Correct Answer: Derived demand
व्युत्पन्न माँग

Candidate Answer: [NOT ANSWERED]

Question 32. Depreciation is loss in value of _____

मूल्य हास किसके मूल्य की हानि है ?

Options:

- 1) Final goods
अंतिम उत्पाद (माल)
- 2) Machinery
मशीनरी (यंत्र समूह)
- 3) Capital stock
पूँजी स्टॉक
- 4) Stock of inventory
वस्तुसूची का स्टॉक

Correct Answer: Machinery
मशीनरी (यंत्र समूह)

Candidate Answer: Machinery
मशीनरी (यंत्र समूह)

Question 33. What is the Mehrauli Pillar in the complex of Qutub Minar primarily famous for?

कुतुब मीनार के पास स्थित महरोली पिलर प्राथमिक रूप से किस कारण प्रसिद्ध है?

Options:

- 1) Proverbial height
लोकप्रसिद्ध ऊँचाई के कारण
- 2) Skilful stone cutting
पत्थर पर हुई कटाई की कारीगरी के कारण
- 3) Excellent quality steel
उत्कृष्ट गुणवत्ता की ईस्पात के कारण
- 4) Statue of Buddha on top
शीर्ष पर बुद्ध की मूर्ती के कारण

Correct Answer: Excellent quality steel
उत्कृष्ट गुणवत्ता की ईस्पात के कारण

Candidate Answer: [NOT ANSWERED]

Question 34. Harvesting season of Kharif crop in India is _____

भारतवर्ष में खरीफ की फसल की कटाई वर्ष के किन महीनों में की जाती है ?

Options:

- 1) January-March
जनवरी-मार्च
- 2) February-April
फरवरी-अप्रैल
- 3) September-October
सितंबर-अक्टूबर
- 4) November-January
नवम्बर-जनवरी

Correct Answer: September-October
सितंबर-अक्टूबर

Candidate Answer: September-October
सितंबर-अक्टूबर

Question 35. Which of the following produces the most solid waste ?

निम्नलिखित में से कौन सबसे ज्यादा ठोस अपरिष्कृत उत्पन्न करता है?

Options:

- 1) Agriculture
कृषि
- 2) Nuclear Power Plants
न्यूक्लियर पावर संयंत्र
- 3) Manufacturing
उत्पादन उद्योग
- 4) Packaging Industry
पैकिंग उद्योग

Correct Answer: Manufacturing
उत्पादन उद्योग

Candidate Answer: [NOT ANSWERED]

Question 36. Potassium Permanganate is used for purifying drinking water, because _____

पोटेशियम परमैंगनेट का प्रयोग पेयजल के शुद्धीकरण के लिए किया जाता है क्योंकि यह

Options:

- 1) It is a reducing agent
अवकृत एजेंट है
- 2) It is an oxidising agent
एक आक्सिडाइसिंग एजेंट है
- 3) It is a sterilising agent
बन्धयीकरण एजेंट है
- 4) It dissolves the impurities of water
जल की अशुद्धियों को घोल देता है

Correct Answer: It is an oxidising agent
एक आक्सिडाइसिंग एजेंट है

Candidate Answer: It dissolves the impurities of water
जल की अशुद्धियों को घोल देता है

Question 37. Spraying of DDT on crops causes pollution of _____

फसलों पर डी.डी.टी. का छिड़काव किस प्रकार का प्रदूषण उत्पन्न करता है?

Options:

- 1) Air & Soil
वायू तथा मृदा
- 2) Crops & Air
फसल तथा वायु
- 3) Soil & Water
मृदा तथा जल
- 4) Air & Water
वायू तथा जल

Correct Answer: Soil & Water
मृदा तथा जल

Candidate Answer: [NOT ANSWERED]

Question 38. Which cells in pancreas produce Insulin ?

पैन्क्रियास की कोशिकाएं, जो इन्सुलिन उत्पन्न करती हैं, क्या कहलाती हैं?

Options:

- 1) Thymus
थायमस
- 2) Estrogen
एस्ट्रोजेन
- 3) Corpus epididymis
कार्पस ऐपीडिडायमिस
- 4) Islets of Langerhans
आइलैट्स ऑफ लैंगरहैन्स

Correct Answer: Islets of Langerhans
आइलैट्स ऑफ लैंगरहैन्स

Candidate Answer: Thymus
थायमस

Question 39. When we see an object, the image formed on the retina is _____

जब हम किसी वस्तु (पिण्ड) को देखते हैं तो रेटिना पर बनने वाला प्रतिबिंब कैसा होगा ?

Options:

- 1) Real and inverted
वास्तविक तथा उल्टा
- 2) Real and erect
वास्तविक तथा सीधा
- 3) Virtual and erect
कल्पित तथा सीधा
- 4) Virtual and inverted
कल्पित तथा उल्टा

Correct Answer: Real and inverted
वास्तविक तथा उल्टा

Candidate Answer: Real and inverted
वास्तविक तथा उल्टा

Question 40. Find the "odd one out".

निम्नलिखित में से कौनसा विकल्प अलग है ?

Options:

- 1) Linux
लाइनक्स
- 2) Windows 98
विन्डोज 98
- 3) C++
C++
- 4) Windows 7
विन्डोज 7

Correct Answer: C++
C++

Candidate Answer: C++
C++

Question 41. Kinetic energy depends on

गतिज ऊर्जा किस पर निर्भर करती है?

Options:

- 1) the velocity or speed of the moving body.
गतिशील /चलनशील पिण्ड के वेग पर
- 2) the mass of the moving body
गतिशील पिण्ड के भार पर
- 3) the pressure of the moving body
गतिशील पिण्ड के दाब पर
- 4) both mass and velocity of the moving body
गतिशील पिण्ड के वेग तथा भार दोनों पर

Correct Answer: both mass and velocity of the moving body
गतिशील पिण्ड के वेग तथा भार दोनों पर

Candidate Answer: [NOT ANSWERED]

Question 42. In which form is the supplied heat energy stored during change in temperature of substance?

किसी पदार्थ में ताप परिवर्तन के दौरान संचारित उष्मा ऊर्जा किस रूप में संग्रहित रहती है ?

Options:

- 1) Heat energy
उष्मा ऊर्जा
- 2) Kinetic energy
गतिज ऊर्जा
- 3) Potential energy
विभव ऊर्जा
- 4) Both kinetic and potential energy
गतिज तथा विभव ऊर्जा दोनों

Correct Answer: Kinetic energy
गतिज ऊर्जा

Candidate Answer: [NOT ANSWERED]

Question 43. Atoms of same element having different mass numbers are called_____

जब किसी तत्व के परमाणु की एक से ज्यादा द्रव्यमान संख्या होती है तो उसे क्या कहते हैं?

Options:

- 1) Isobars
आयसोबार
- 2) Isotopes
आयसोटोप
- 3) Isotones
आयसोटोन
- 4) Isomers
आयसोमर

Correct Answer: Isotopes
आयसोटोप

Candidate Answer: Isotopes
आयसोटोप

Question 44. Which script was used in Ashoka's inscriptions?

अशोक के शिलालेख पर किस लिपी का प्रयोग किया गया था?

Options:

- 1) Brahmi
ब्रह्मि
- 2) Devanagiri
देवनागरी
- 3) Gurmukhi
गुरमुखी
- 4) Sanskrit
संस्कृत

Correct Answer: Brahmi

ब्रह्मि

Candidate Answer: Devanagiri

देवनागरी

Question 45. The ideas of Liberty, Equality and Fraternity, which influenced the Indian National Movement, was taken from _____

स्वतंत्रता, समानता और बंधुत्वता के विचार, जिनसे भारत का राष्ट्रीय आंदोलन प्रभावित हुआ था, कहाँ से लिए गए थे?

Options:

- 1) American Revolution
अमरीकी क्रांति
- 2) Russian Revolution
रूसी क्रांति
- 3) Chinese revolution
चीनी क्रांति
- 4) French revolution
फ्रांस की क्रांति

Correct Answer: French revolution

फ्रांस की क्रांति

Candidate Answer: French revolution

फ्रांस की क्रांति

Question 46. The Kaushal Kendra (skilling center) under the Pradhan Mantri Mudra Yojana has been inaugurated in the city of _____

प्रधान मंत्री मुद्रा योजना के तहत कौशल केन्द्र (कारीगरी केंद्र) का उद्घाटन किस शहर में किया गया ?

Options:

- 1) Noida
नोएडा
- 2) Kolkata
कोलकाता
- 3) Mumbai
मुंबई
- 4) Hyderabad
हैदराबाद

Correct Answer: Noida

नोएडा

Candidate Answer: Noida

नोएडा

Question 47. Which one of the following is not the official language of the UNO?

संयुक्त राष्ट्र संघ में निम्नलिखित में से कौनसी काम काज की भाषा नहीं है?

Options:

- 1) French
फ्रेंच
- 2) Arabic
ऐरेबिक
- 3) Spanish
स्पैनिश
- 4) Japanese
जापानी

Correct Answer: Japanese

जापानी

Candidate Answer: Japanese

जापानी

Question 48. With the participation in the Rio Olympics who has become the first tennis player in the world to have 7 appearances in Olympics?

रिओ ओलिंपिक्स में भाग लेनेवाले वह कौनसे टेनिस खिलाड़ी हैं जो सात बार ओलिंपिक्स में भाग ले चुके हैं?

Options:

- 1) Martina Navratilova
मार्टिना नैवरातिलोवा
- 2) Serena Williams
सेरेना विलियम्स
- 3) Leander Paes
लियंडर पेस
- 4) Roger Federer
रौजर फेडरर

Correct Answer: Leander Paes
लियंडर पेस

Candidate Answer: Martina Navratilova
मार्टिना नैवरातिलोवा

Question 49. How many rings are there in the Olympic flag?

ऑलिंपिक्स झंडे में कितनी रिंग्स हैं?

Options:

- 1) 4
- 2) 5
- 3) 6
- 4) 7

Correct Answer: 5

Candidate Answer: 5

Question 50. Indian Army's School of Artillery is located at _____

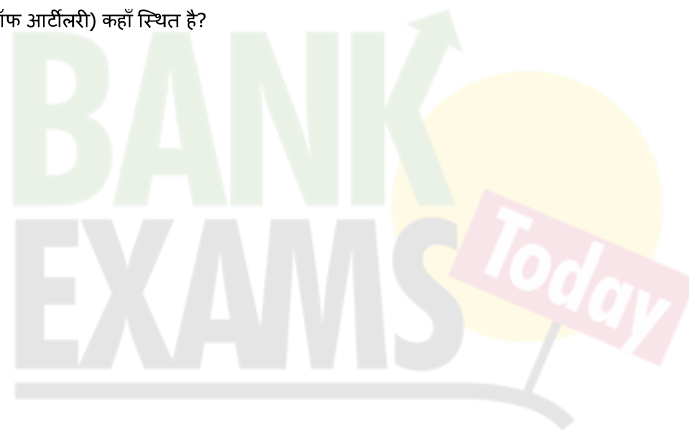
भारतीय सेना का तोपखाना विद्यालय (स्कूल ऑफ आर्टिलरी) कहाँ स्थित है?

Options:

- 1) Khadakvasala
खडकवासला
- 2) Dehradun
देहरादून
- 3) Deolali
देवलाली
- 4) Roorkee
रुड़की

Correct Answer: Deolali
देवलाली

Candidate Answer: Roorkee
रुड़की



Question 51. A and B together can do a piece of work in 12 days while A alone can do the same work in 30 days. B alone can do it in

A और B किसी काम को मिलकर 12 दिन में कर सकते हैं जबकि A अकेला उसी काम को 30 दिन में कर सकता है। B अकेले उसी काम को कितने दिन में कर सकता है ?

Options:

- 1) 18 days
18 दिन
- 2) 20 days
20 दिन
- 3) 15 days
15 दिन
- 4) 22 days
22 दिन

Correct Answer: 20 days
20 दिन

Candidate Answer: 20 days
20 दिन

Question 52.

The diagonal of a cube is $\sqrt{192}$ cm. Its volume (in cm^3) will be

किसी घन का विकर्ण $\sqrt{192}$ से.मी. है। इसका आयतन (सेमी.³) कितना होगा ?

Options:

- 1) 216
2) 432
3) 512
4) 624

Correct Answer: 512**Candidate Answer:** [NOT ANSWERED]

Question 53. A watch is listed for Rs.230 and is sold at a discount of 12%, then the sale price of the watch is

एक घड़ी का मूल्य Rs. 230 है। वह 12% की छूट पर बेची जाती है, तो घड़ी का बिक्री मूल्य कितना होगा ?

Options:

- 1) Rs.27.6
2) Rs.276
3) Rs.202.4
4) Rs.257.6

Correct Answer: Rs.202.4**Candidate Answer:** Rs.202.4

Question 54. Ravi has a roadmap with a scale of 1.5 cm for 18 km. He drives on that road for 72 km. What would be his distance covered in that map.

रवि के पास प्रति 18 कि.मी. के लिए 1.5 से.मी. वाला रोडमैप है। वह उस सड़क पर 72 कि.मी. चलता है। उस मैप में तय की गई दूरी कितनी होगी ?

Options:

- 1) 4 cm
4 से.मी.
2) 6 cm
6 से.मी.
3) 8 cm
8 से.मी.
4) 7 cm
7 से.मी.

Correct Answer: 6 cm

6 से.मी.

Candidate Answer: [NOT ANSWERED]

Question 55. The profit (in Rs.) after selling an article for Rs.524 is the same as the loss (in Rs.) after selling it for Rs.452. The cost price of the article is:

किसी वस्तु को Rs. 524 में बेचने पर उतना ही लाभ होता है जितना उसे Rs. 452 में बेचने पर हानि होती है। वस्तु का क्रय मूल्य क्या है ?

Options:

- 1) Rs.480
2) Rs.485
3) Rs.488
4) Rs.500

Correct Answer: Rs.488**Candidate Answer:** [NOT ANSWERED]

Question 56. A circle and a square have same area. The ratio of the side of the square to the radius of the circle will be:

एक वृत्त तथा एक वर्ग के क्षेत्रफल समान हैं। वर्ग की भुजा और वृत्त की त्रिज्या का अनुपात क्या है?

Options:

- 1)
 $\sqrt{\pi}:1$
2)
 $1:\sqrt{\pi}$
3)
 $\pi^2:1$
4)
 $1:\pi$

Correct Answer:

$\sqrt{\pi}: 1$

Candidate Answer: [NOT ANSWERED]

Question 57. How long does a train, 75 m long, moving at 60 km/hr take to pass a certain telegraph post?

75 मी. लम्बी एक रेलगाड़ी 60 कि.मी./घण्टे की चाल से किसी टेलीग्राफ के खम्भे को पार करने में कितना समय लेगी ?

Options:

1) 3.5 seconds

3.5 सेकंड्स

2) 4.5 seconds

4.5 सेकंड्स

3) 5 seconds

5 सेकंड्स

4) 5.4 seconds

5.4 सेकंड्स

Correct Answer: 4.5 seconds

4.5 सेकंड्स

Candidate Answer: 4.5 seconds

4.5 सेकंड्स

Question 58.

If $2x - \frac{2}{x} = 1$ ($x \neq 0$), then the value of $x^3 - \frac{1}{x^3}$ isयदि $2x - \frac{2}{x} = 1$ ($x \neq 0$), हो तो $x^3 - \frac{1}{x^3}$ का मान क्या है ?**Options:**1) $\frac{13}{4}$ 2) $\frac{13}{8}$ 3) $\frac{17}{4}$ 4) $\frac{17}{8}$ **Correct Answer:** $\frac{13}{8}$ **Candidate Answer:** [NOT ANSWERED]

Question 59.

if $(a + \frac{1}{a})^2 = 3$, then the value of $a^2 + \frac{1}{a^2}$ will beयदि $(a + \frac{1}{a})^2 = 3$ हो तो $a^2 + \frac{1}{a^2}$ का मान क्या होगा ?**Options:**

1) 0

2) 1

3) 2

4) 3

Correct Answer: 1**Candidate Answer:** [NOT ANSWERED]

Question 60. The point equidistant from the vertices of a triangle is called its

एक त्रिभुज के शीर्षों से समांतराली बिन्दु को क्या कहते हैं?

Options:

- 1) incentre
अंतकेन्द्र
- 2) circumcentre
परिकेन्द्र
- 3) orthocentre
लंबकेन्द्र
- 4) centroid
केन्द्रक

Correct Answer: circumcentre

परिकेन्द्र

Candidate Answer: centroid

केन्द्रक

Question 61. If one angle of a triangle is equal to half the sum of the other two equal angles, then the triangle is

यदि किसी त्रिभुज का एक कोण दूसरे दो समान कोणों के योग के आधे के बराबर है, तो त्रिभुज कैसा है ?

Options:

- 1) isosceles
समद्विबाहु
- 2) scalene
विषमबाहु
- 3) equilateral
समभुज
- 4) right angled
समकोणिक

Correct Answer: equilateral

समभुज

Candidate Answer: isosceles

समद्विबाहु

Question 62.

If $\sin^2\theta - \cos^2\theta = \frac{1}{4}$, then the value of

$\sin^4\theta - \cos^4\theta$ is

यदि $\sin^2\theta - \cos^2\theta = \frac{1}{4}$, हो तो $\sin^4\theta - \cos^4\theta$ का मान क्या होगा ?

Options:

- 1) $\frac{3}{4}$
- 2) $\frac{1}{4}$
- 3) $\frac{1}{16}$
- 4) $\frac{1}{2}$

Correct Answer: $\frac{1}{4}$

Candidate Answer: [NOT ANSWERED]

Question 63. The least number, which when divided by 5, 6, 7 and 8 leaves a remainder 3 in each case, but when divided by 9 leaves no remainder, is:

वह सबसे छोटी संख्या कौन-सी है जिसे 5,6,7,8 से भाग देने पर प्रत्येक दशा में 3 शेष रहे, किन्तु 9 से भाग देने पर कुछ शेष न रहे ?

Options:

- 1) 1677
- 2) 1683
- 3) 2523
- 4) 3363

Correct Answer: 1683

Candidate Answer: 1683

Question 64. A cricketer, whose bowling average was 12.4 runs/wicket takes 5 wickets for 22 runs in a match, thereby decreases his average by 0.4. The number of wickets, taken by him before this match was:

किसी क्रिकेटर ने, जिसकी गेंदबाजी का औसत 12.4 रन प्रति विकेट था, एक मैच में 22 रन देकर 5 विकेट लिए जिससे उसकी गेंदबाजी के औसत में 0.4 की कमी आ जाती है। इस मैच से पहले उसके द्वारा लिए गये विकेटों की संख्या कितनी थी ?

Options:

1) 78

2) 87

3) 95

4) 105

Correct Answer: 95

Candidate Answer: [NOT ANSWERED]

Question 65. Sum of the factors of $4b^2c^2 - (b^2 + c^2 - a^2)^2$ is

$4b^2c^2 - (b^2 + c^2 - a^2)^2$ के गुणों का योग कितना है ?

Options:

1) $a + b + c$

2) $2(a + b + c)$

3) 0

4) 1

Correct Answer: $2(a + b + c)$

Candidate Answer: [NOT ANSWERED]

Question 66. If $\left\{\frac{1}{2}(a - b)\right\}^2 + ab = p(a + b)^2$, then the value of p is

यदि $\left\{\frac{1}{2}(a - b)\right\}^2 + ab = p(a + b)^2$ हो तो p का मान क्या है ?

Options:

1) $p = 4$

2)

$p = \frac{1}{2}$

3)

$p = \frac{1}{4}$

4) $p = 2$

Correct Answer:

$p = \frac{1}{4}$

Candidate Answer: [NOT ANSWERED]

Question 67. The sum of two angles of a triangle is 116° and their difference is 24° . The measure of smallest angle of the triangle is

किसी त्रिभुज के दो कोणों का योग 116° है और उनका अन्तर 24° है। त्रिभुज के सबसे छोटे कोण की माप क्या है ?

Options:

1) 38°

2) 28°

3) 46°

4) 64°

Correct Answer: 46°

Candidate Answer: 46°

Question 68. In a ΔABC , $DE \parallel BC$. D and E lie on AB and AC respectively. If $AB = 7$ cm and $BD = 3$ cm, then find BC:DE

एक ΔABC में $DE \parallel BC$ है। D और E क्रमशः AB और AC पर पड़ते हैं। यदि $AB = 7$ से.मी. और $BD = 3$ से.मी. हो तो BC:DE ज्ञात कीजिए ?

Options:

1) 2:2

2) 3:2

3) 3.5 : 2

4) 7:2

Correct Answer: 3.5 : 2**Candidate Answer:** [NOT ANSWERED]

Question 69.

The value of $\frac{\sin^2 63^\circ + \sin^2 27^\circ}{\cos^2 17^\circ + \cos^2 73^\circ}$ is $\frac{\sin^2 63^\circ + \sin^2 27^\circ}{\cos^2 17^\circ + \cos^2 73^\circ}$ का मान ज्ञात कीजिए ?**Options:**

1) 0

2) 1

3) 2

4) -1

Correct Answer: 1**Candidate Answer:** [NOT ANSWERED]

Question 70. The difference between the compound interest and the simple interest on Rs. 6250 at 8% per annum in 2 years is

Rs. 6250 पर 8% वार्षिक की दर से चक्रवृद्धि ब्याज और साधारण ब्याज का अन्तर क्या होगा ?

Options:

1) Rs.30

2) Rs.40

3) Rs.50

4) Rs.60

Correct Answer: Rs.40**Candidate Answer:** [NOT ANSWERED]Question 71. If the angle of elevation of the top of a pillar from the ground level is raised from 30° to 60° , the length of the shadow of a pillar of height $50\sqrt{3}$ will be decreased byयदि जमीनी तल से किसी खम्भे के शीर्ष का उन्नयन कोण 30° से बढ़ाकर 60° किया जाता है तो $50\sqrt{3}$ ऊँचे खम्भे की छाया की लम्बाई कितनी घट जाएगी ?**Options:**

1) 60 m

60 मी.

2) 75 m

75 मी.

3) 100 m

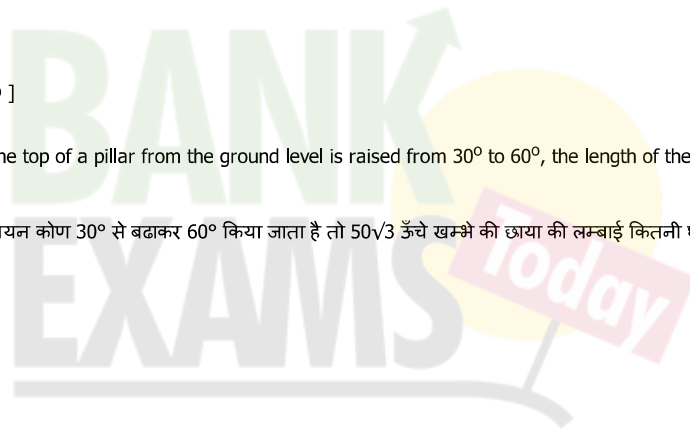
100 मी.

4) 50 m

50 मी.

Correct Answer: 100 m

100 मी.

Candidate Answer: [NOT ANSWERED]

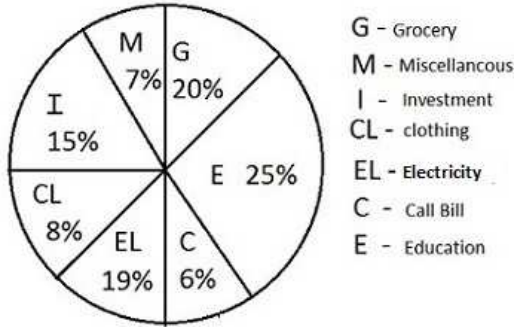
Question 72. Study the following pie-chart and answer the questions.

Budget estimated by a family for their monthly expenses.

Total salary = ₹ 32000 per month

निम्नलिखित पाई चार्ट का अध्ययन कीजिए और प्रश्नों का उत्तर दीजिए।

परिवार द्वारा अपने मासिक खर्च के लिए अनुमानित बजट कुल वेतन = ₹ 32000 प्रति माह



The budget estimated by the family on Clothing and Grocery together is

परिवार द्वारा वस्त्र एवं किराने पर कुल मिलाकर अनुमानित बजट कितना है ?

Options:

- 1) Rs.8950
- 2) Rs.8960
- 3) Rs.8850
- 4) Rs.8860

Correct Answer: Rs.8960

Candidate Answer: Rs.8960

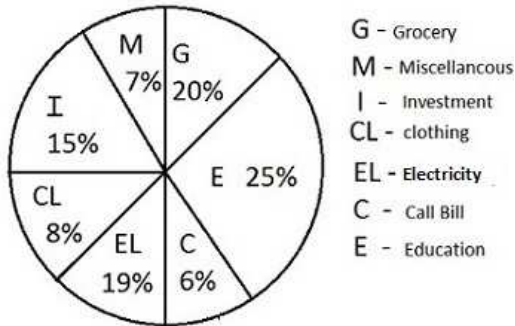
Question 73. Study the following pie-chart and answer the questions.

Budget estimated by a family for their monthly expenses.

Total salary = ₹ 32000 per month

निम्नलिखित पाई चार्ट का अध्ययन कीजिए और प्रश्नों का उत्तर दीजिए।

परिवार द्वारा अपने मासिक खर्च के लिए अनुमानित बजट कुल वेतन = ₹ 32000 प्रति माह



Due to sudden marriage, the family incurs miscellaneous expenditure of Rs. 3040 in total. Then the increase in the amount under this head from that budgeted is

अचानक विवाह के कारण परिवार कुल Rs. 3040 का विविध व्यय करता है। अनुमानित बजट में से इस मद के अर्न्तगत राशि में कितनी वृद्धि हुई ?

Options:

- 1) Rs.810
- 2) Rs.1738
- 3) Rs.234
- 4) Rs.800

Correct Answer: Rs.800

Candidate Answer: [NOT ANSWERED]

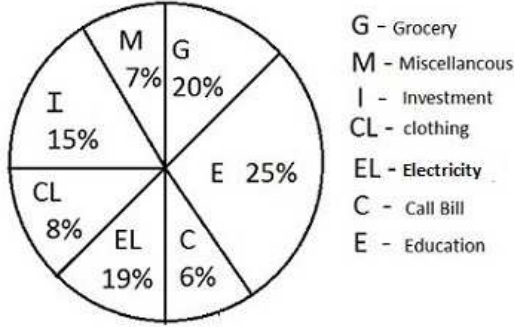
Question 74. Study the following pie-chart and answer the questions.

Budget estimated by a family for their monthly expenses.

Total salary = ₹ 32000 per month

निम्नलिखित पाई चार्ट का अध्ययन कीजिए और प्रश्नों का उत्तर दीजिए।

परिवार द्वारा अपने मासिक खर्च के लिए अनुमानित बजट कुल वेतन = ₹ 32000 प्रति माह



The difference in the amount estimated by the family on Electricity and Call bill is:

परिवार द्वारा बिजली और कॉल बिल पर अनुमानित राशि में कितना अन्तर है ?

Options:

- 1) Rs.4560
- 2) Rs.4470
- 3) Rs.4168
- 4) Rs.4160

Correct Answer: Rs.4160

Candidate Answer: Rs.4160

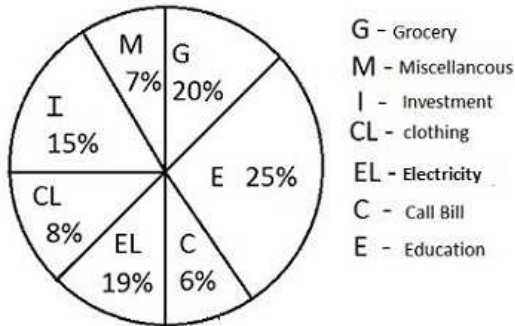
Question 75. Study the following pie-chart and answer the questions.

Budget estimated by a family for their monthly expenses.

Total salary = ₹ 32000 per month

निम्नलिखित पाई चार्ट का अध्ययन कीजिए और प्रश्नों का उत्तर दीजिए।

परिवार द्वारा अपने मासिक खर्च के लिए अनुमानित बजट कुल वेतन = ₹ 32000 प्रति माह



The family actually spent Rs.4672 on Grocery. Then the difference in the amount budgeted and spent on grocery is:

परिवार ने किराने पर वास्तव में Rs. 4672 का खर्च किया तो किराने पर अनुमानित बजट राशि और व्यय की गई राशि में क्या अन्तर है ?

Options:

- 1) Rs.1528
- 2) Rs.1728
- 3) Rs.1278
- 4) Rs.1628

Correct Answer: Rs.1728

Candidate Answer: Rs.1728

Question 76. In the following question, out of the four alternatives, choose the word which best expresses the meaning of the given word and click the button corresponding to it.

MASTICATE

Options:

- 1) CHEW
- 2) CHOKE
- 3) BITE
- 4) SWALLOW

Correct Answer: CHEW

Candidate Answer: [NOT ANSWERED]

Question 77. In the following question, out of the four alternatives, choose the word which is opposite in meaning to the given word and click the button corresponding to it.

FEROCIOUS

Options:

- 1) MILD
- 2) SWEET
- 3) BRUTAL
- 4) WILD

Correct Answer: MILD

Candidate Answer: SWEET

Question 78. Four words are given, out of which only one word is spelt correctly. Choose the correctly spelt word and click the button corresponding to it.

Options:

- 1) Alleviate
- 2) Allaviate
- 3) Alliveate
- 4) Allaevate

Correct Answer: Alleviate

Candidate Answer: Alleviate

Question 79. In the following questions, one part of the sentence may have an error. Find out which part of the sentence has an error and click the button corresponding to it. If the sentence is free from error, click the "No error" option.

The reason Janet came dressed (A) / as Lady Gaga was because she'd been told (B) / it was a costume party (C) / No error (D).

Options:

- 1) A
- 2) B
- 3) C
- 4) D

Correct Answer: B

Candidate Answer: B

Question 80. In the following questions, one part of the sentence may have an error. Find out which part of the sentence has an error and click the button corresponding to it. If the sentence is free from error, click the "No error" option.

The path to (A) / the famous church passes (B) / through a forest (C) / No error (D).

Options:

- 1) A
- 2) B
- 3) C
- 4) D

Correct Answer: D

Candidate Answer: D

Question 81. In the following questions, one part of the sentence may have an error. Find out which part of the sentence has an error and click the button corresponding to it. If the sentence is free from error, click the "No error" option.

A first European sailor (A) / who came to India (B) / was Vasco-da-Gama (C) / No error (D).

Options:

- 1) A
- 2) B
- 3) C
- 4) D

Correct Answer: A

Candidate Answer: A

Question 82. The sentences given with blanks are to be filled with an appropriate word(s). Four alternatives are suggested for each question. For each question, choose the correct alternative and click the button corresponding to it.

Legislation was passed to punish brokers who _____ their client's funds.

Options:

- 1) devastate
- 2) devour
- 3) defalcate
- 4) dawdle

Correct Answer: defalcate

Candidate Answer: devastate

Question 83. The sentences given with blanks are to be filled with an appropriate word(s). Four alternatives are suggested for each question. For each question, choose the correct alternative and click the button corresponding to it.

His father was _____ the same business.

Options:

- 1) managing over
- 2) engaged in
- 3) endowed with
- 4) enlisted in

Correct Answer: engaged in

Candidate Answer: engaged in

Question 84. The sentences given with blanks are to be filled with an appropriate word(s). Four alternatives are suggested for each question. For each question, choose the correct alternative and click the button corresponding to it.

It is due to this lethargy that the plan fell _____

Options:

- 1) off
- 2) out
- 3) through
- 4) away

Correct Answer: through

Candidate Answer: out

Question 85. In each of the questions, four alternatives are given for the Idiom/Phrase. Choose the alternative which best expresses the meaning of the Idiom/Phrase and click the button corresponding to it.

Bad blood

Options:

- 1) Shooting
- 2) Anaemia
- 3) Enmity
- 4) Mourning

Correct Answer: Enmity

Candidate Answer: Enmity

Question 86. In each of the questions, four alternatives are given for the Idiom/Phrase. Choose the alternative which best expresses the meaning of the Idiom/Phrase and click the button corresponding to it.

To beat about the bush

Options:

- 1) To try to win favours
- 2) To talk well
- 3) To talk about relevant things
- 4) To talk about irrelevant things

Correct Answer: To talk about irrelevant things

Candidate Answer: [NOT ANSWERED]

Question 87. In each of the questions, four alternatives are given for the Idiom/Phrase. Choose the alternative which best expresses the meaning of the Idiom/Phrase and click the button corresponding to it.

Maiden speech

Options:

- 1) Bachelor's speech
- 2) First speech
- 3) Last speech
- 4) Extempore speech

Correct Answer: First speech

Candidate Answer: First speech

Question 88. Out of the four alternatives, choose the one which can be substituted for the given words/sentences and click the button corresponding to it.

A place where money is coined.

Options:

- 1) Bank
- 2) Mint
- 3) Firm
- 4) Parliament

Correct Answer: Mint

Candidate Answer: Mint

Question 89. Out of the four alternatives, choose the one which can be substituted for the given words/sentences and click the button corresponding to it.

The process by means of which plants and animals breathe.

Options:

- 1) Respiration
- 2) Germination
- 3) Absorption
- 4) Transpiration

Correct Answer: Respiration**Candidate Answer:** Respiration

Question 90. Out of the four alternatives, choose the one which can be substituted for the given words/sentences and click the button corresponding to it.

One who sneers at the aims and beliefs of his fellow men.

Options:

- 1) Critic
- 2) Connoisseur
- 3) Pedant
- 4) Cynic

Correct Answer: Cynic**Candidate Answer:** Pedant

Question 91. A sentence/a part of the sentence is underlined. Four alternatives are given to the underlined part which will improve the sentence. Choose the correct alternative and click the button corresponding to it. In case no improvement is needed, click the button corresponding to "No improvement".

He started at the bottom rung of the ladder and then gained success.

Options:

- 1) bottom rung of the stair
- 2) lower rung of the ladder
- 3) lower rung of the stair
- 4) No improvement

Correct Answer: No improvement**Candidate Answer:** lower rung of the ladder

Question 92. A sentence/a part of the sentence is underlined. Four alternatives are given to the underlined part which will improve the sentence. Choose the correct alternative and click the button corresponding to it. In case no improvement is needed, click the button corresponding to "No improvement".

The judge gave the verdict against the Government.

Options:

- 1) pronounced
- 2) declared
- 3) sentenced
- 4) No improvement

Correct Answer: pronounced**Candidate Answer:** declared

Question 93. A sentence/a part of the sentence is underlined. Four alternatives are given to the underlined part which will improve the sentence. Choose the correct alternative and click the button corresponding to it. In case no improvement is needed, click the button corresponding to "No improvement".

The fire service personnel put off the fire with much difficulty.

Options:

- 1) put on
- 2) put out
- 3) put away
- 4) No improvement

Correct Answer: put out**Candidate Answer:** No improvement

Question 94. A sentence/a part of the sentence is underlined. Four alternatives are given to the underlined part which will improve the sentence. Choose the correct alternative and click the button corresponding to it. In case no improvement is needed, click the button corresponding to "No improvement".

He has the irritating habit of playing his own trumpet all the time.

Options:

- 1) blowing his own trumpet
- 2) pumping his own trumpet
- 3) bringing up his own trumpet
- 4) No improvement

Correct Answer: blowing his own trumpet**Candidate Answer:** No improvement

Question 95. A sentence/a part of the sentence is underlined. Four alternatives are given to the underlined part which will improve the sentence. Choose the correct alternative and click the button corresponding to it. In case no improvement is needed, click the button corresponding to "No improvement".

His illness means he must resign his chairmanship impromptu.

Options:

- 1) fast
- 2) forthwith
- 3) earliest
- 4) No improvement

Correct Answer: forthwith**Candidate Answer:** earliest

Question 96. A passage is given with 5 questions following it. Read the passage carefully and choose the best answer to each question out of the four alternatives and click the button corresponding to it.

There is a growing parallel between India and Europe in terms of language policy and challenges of maintaining a balance between regional languages, minority languages and the rising demand for English.

The EU's language policy promotes multinationalism and the idea that every EU citizen should learn and speak at least two foreign languages in addition to their mother tongue. In practice, the foreign language curriculum in European countries is dominated now by the need to learn English. So the defacto policy is that children should, in addition to the language of their member state, learn English and one other European language. English has become not only the language of business across Europe, but also the corporate language of many French, German, Dutch and Spanish enterprises.

The trend across Europe is for schools to begin teaching English in Class I, treating it as a basic skill rather than a foreign language. This trend began in earnest only after 2000. However, the methods to teach English are diverse - an increasingly popular trend is towards bilingual schools, which teach through more than one language medium.

There is a parallel between India and Europe as regards

Options:

- 1) language policy
- 2) trade policy
- 3) foreign policy
- 4) cultural policy

Correct Answer: language policy

Candidate Answer: language policy

Question 97. A passage is given with 5 questions following it. Read the passage carefully and choose the best answer to each question out of the four alternatives and click the button corresponding to it.

There is a growing parallel between India and Europe in terms of language policy and challenges of maintaining a balance between regional languages, minority languages and the rising demand for English.

The EU's language policy promotes multinationalism and the idea that every EU citizen should learn and speak at least two foreign languages in addition to their mother tongue. In practice, the foreign language curriculum in European countries is dominated now by the need to learn English. So the defacto policy is that children should, in addition to the language of their member state, learn English and one other European language. English has become not only the language of business across Europe, but also the corporate language of many French, German, Dutch and Spanish enterprises.

The trend across Europe is for schools to begin teaching English in Class I, treating it as a basic skill rather than a foreign language. This trend began in earnest only after 2000. However, the methods to teach English are diverse - an increasingly popular trend is towards bilingual schools, which teach through more than one language medium.

According to the passage, the foreign language policy in the EU aims to foster.

Options:

- 1) English
- 2) Multilingualism
- 3) Bilingualism
- 4) Only native language

Correct Answer: Multilingualism

Candidate Answer: English

Question 98. A passage is given with 5 questions following it. Read the passage carefully and choose the best answer to each question out of the four alternatives and click the button corresponding to it.

There is a growing parallel between India and Europe in terms of language policy and challenges of maintaining a balance between regional languages, minority languages and the rising demand for English.

The EU's language policy promotes multinationalism and the idea that every EU citizen should learn and speak at least two foreign languages in addition to their mother tongue. In practice, the foreign language curriculum in European countries is dominated now by the need to learn English. So the defacto policy is that children should, in addition to the language of their member state, learn English and one other European language. English has become not only the language of business across Europe, but also the corporate language of many French, German, Dutch and Spanish enterprises.

The trend across Europe is for schools to begin teaching English in Class I, treating it as a basic skill rather than a foreign language. This trend began in earnest only after 2000. However, the methods to teach English are diverse - an increasingly popular trend is towards bilingual schools, which teach through more than one language medium.

The passage says that the rising demand for English in the EU is because of

Options:

- 1) immigrants
- 2) emigrants
- 3) Government policy
- 4) trade and commerce

Correct Answer: trade and commerce

Candidate Answer: [NOT ANSWERED]

Question 99. A passage is given with 5 questions following it. Read the passage carefully and choose the best answer to each question out of the four alternatives and click the button corresponding to it.

There is a growing parallel between India and Europe in terms of language policy and challenges of maintaining a balance between regional languages, minority languages and the rising demand for English.

The EU's language policy promotes multinationalism and the idea that every EU citizen should learn and speak at least two foreign languages in addition to their mother tongue. In practice, the foreign language curriculum in European countries is dominated now by the need to learn English. So the defacto policy is that children should, in addition to the language of their member state, learn English and one other European language. English has become not only the language of business across Europe, but also the corporate language of many French, German, Dutch and Spanish enterprises.

The trend across Europe is for schools to begin teaching English in Class I, treating it as a basic skill rather than a foreign language. This trend began in earnest only after 2000. However, the methods to teach English are diverse - an increasingly popular trend is towards bilingual schools, which teach through more than one language medium.

EU schools regard English as

Options:

- 1) a foreign language
- 2) a difficult language
- 3) a basic skill
- 4) an adult skill

Correct Answer: a basic skill

Candidate Answer: a basic skill

Question 100. A passage is given with 5 questions following it. Read the passage carefully and choose the best answer to each question out of the four alternatives and click the button corresponding to it.

There is a growing parallel between India and Europe in terms of language policy and challenges of maintaining a balance between regional languages, minority languages and the rising demand for English.

The EU's language policy promotes multinationalism and the idea that every EU citizen should learn and speak at least two foreign languages in addition to their mother tongue. In practice, the foreign language curriculum in European countries is dominated now by the need to learn English. So the defacto policy is that children should, in addition to the language of their member state, learn English and one other European language. English has become not only the language of business across Europe, but also the corporate language of many French, German, Dutch and Spanish enterprises.

The trend across Europe is for schools to begin teaching English in Class I, treating it as a basic skill rather than a foreign language. This trend began in earnest only after 2000. However, the methods to teach English are diverse - an increasingly popular trend is towards bilingual schools, which teach through more than one language medium.

In Europe the usual pattern is that

Options:

- 1) children should study English late in life
- 2) children should start learning English from class I
- 3) children may not study English when they are at school
- 4) children ought to study English just as a lingua franca

Correct Answer: children should start learning English from class I

Candidate Answer: children should start learning English from class I